


A photograph of two men in a professional setting, likely a design studio. An older man with glasses and a striped polo shirt is leaning over a desk, looking at a computer screen. A younger man is sitting next to him, also looking at the screen. The image has a green tint and is partially obscured by a yellow horizontal bar at the bottom.

# Design Capability



Award winning creators of quiet, **energy efficient attenuators, fan coil units, contemporary louvres, enclosures and screens**, bespoke services and **acoustic consultancy** for the construction industry.

## Caice Design

Over recent years Caice has made a significant investment in our Contracts Design and Product Development teams with the goal of creating a highly efficient design resource that can deliver market leading products proficiently tailored to a project's requirements. The investments made include;

- ✓ **Autodesk Inventor® Computer Aided Design (CAD) software**
- ✓ **Autodesk subscription ensuring latest updates**
- ✓ **Autodesk Vault® data management software**
- ✓ **Product Design Templates**
- ✓ **Design Team Training**

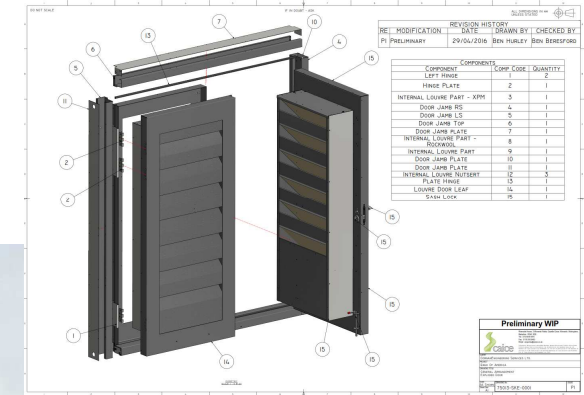


# Autodesk Inventor® Computer Aided Design (CAD) software

This is state of the art 3D parametric software that has many advantages over the traditional 2D CAD including the following;

- ✓ It allows the product installation to be rapidly modelled in 3D, creating a virtual prototype that can viewed from any angle, allowing clashes and potential installation issues to be easily identified.
- ✓ The 3D parametric model allows the creation of relationships between dimensions and parts, capturing the design intent and allowing easy and accurate editing.
- ✓ Manufacture information can be swiftly generated from the same 3D model, such as the automatic generation of developed flat patterns for sheet metal parts.
- ✓ 3D Prototyping prior to manufacture of physical prototype, saving time in redevelopment and modifications.

Typical assembly drawing

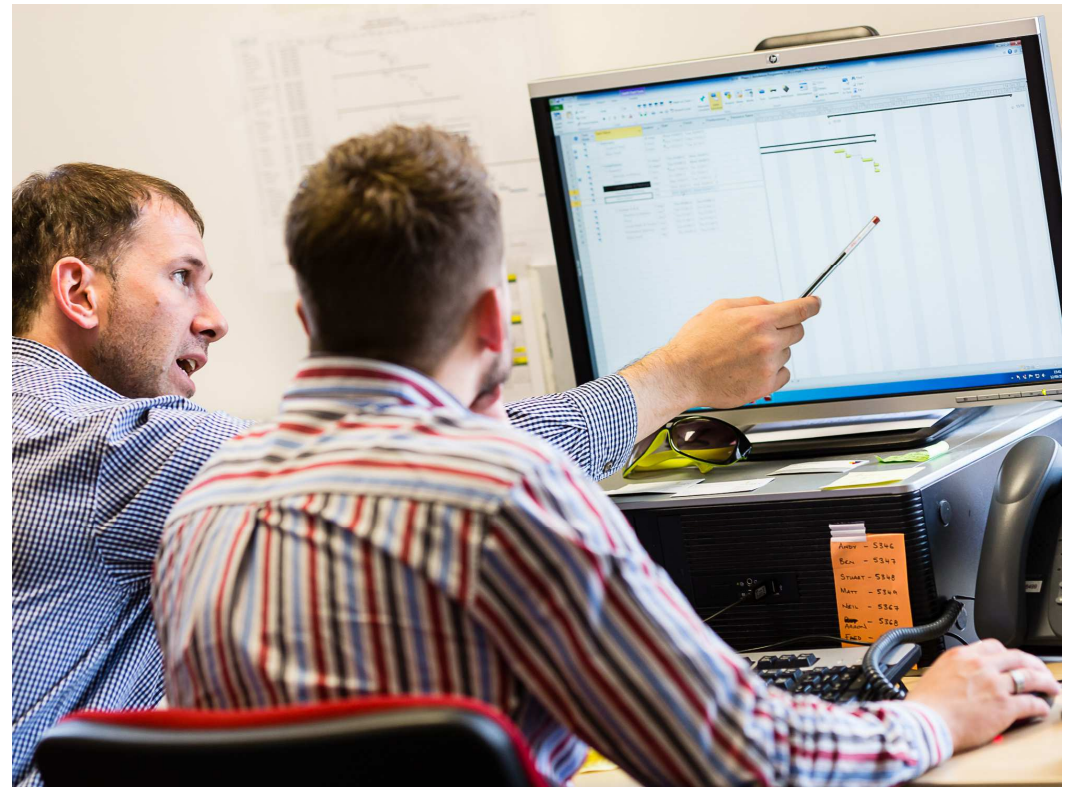


# Autodesk Vault® data management software

---

This powerful data management software gives the following benefits;

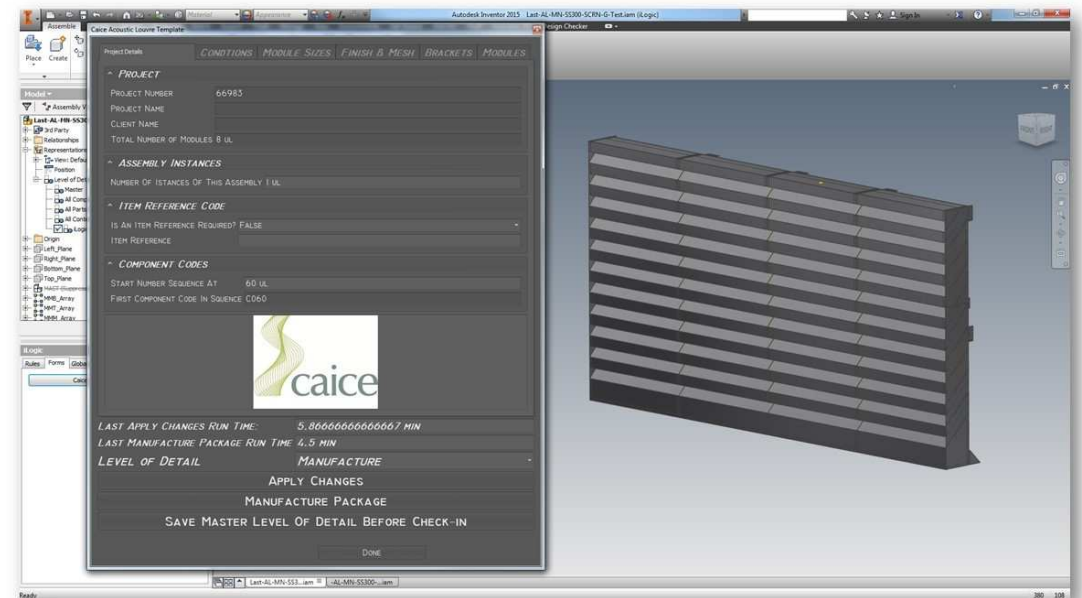
- ✓ **Allows the easy management of design data and maintains a central document store that is accessible to all offices and remote users.**
- ✓ **Facilities seamless reuse of existing designs and standard library components.**
- ✓ **Creates an environment that promotes the creation and correct use of company design standards.**
- ✓ **Can rapidly search the entire design data store and find existing design solutions.**



# Product Design Templates

These are sophisticated and automated product design templates that are developed in house, using Visual Basic programming, for standard products. The benefits of these templates are;

- ✓ **Automation of the design process allowing complex products to be resized, to fit a project's requirements, in minutes from the input of a few dimensions and configuration options.**
- ✓ **The rapid and automatic creation of manufacture information, in a bespoke format that efficiently meshes with our production systems.**
- ✓ **Accurate maintenance of company product design standards.**



Caice i-logic template : Used to quickly generate an acoustic louvre screen

# Design Team Training

---

Extensive in house and external training for the Contracts Design and Product Development teams including;

- ✓ **External training, from a certified provider, is given to ensure proficient use of new software tools.**
- ✓ **Internal training is provided to ensure product standards are preserved, correct procedures are adhered to and that a high quality of design output is maintained across the company.**

## What does this mean for you?

Well in short it allows CAICE to produce a design to suit Architects, Acoustic Consultants and end user's designs in a clear and accurate fashion. Additional details such as sections can be created quickly and are "live", if the design "model" changes so too does the section.

The time invested in the upfront design pays dividends once approval is granted, manufacturing drawings are easily created along with B.O.M.'s and machining information for tooling.





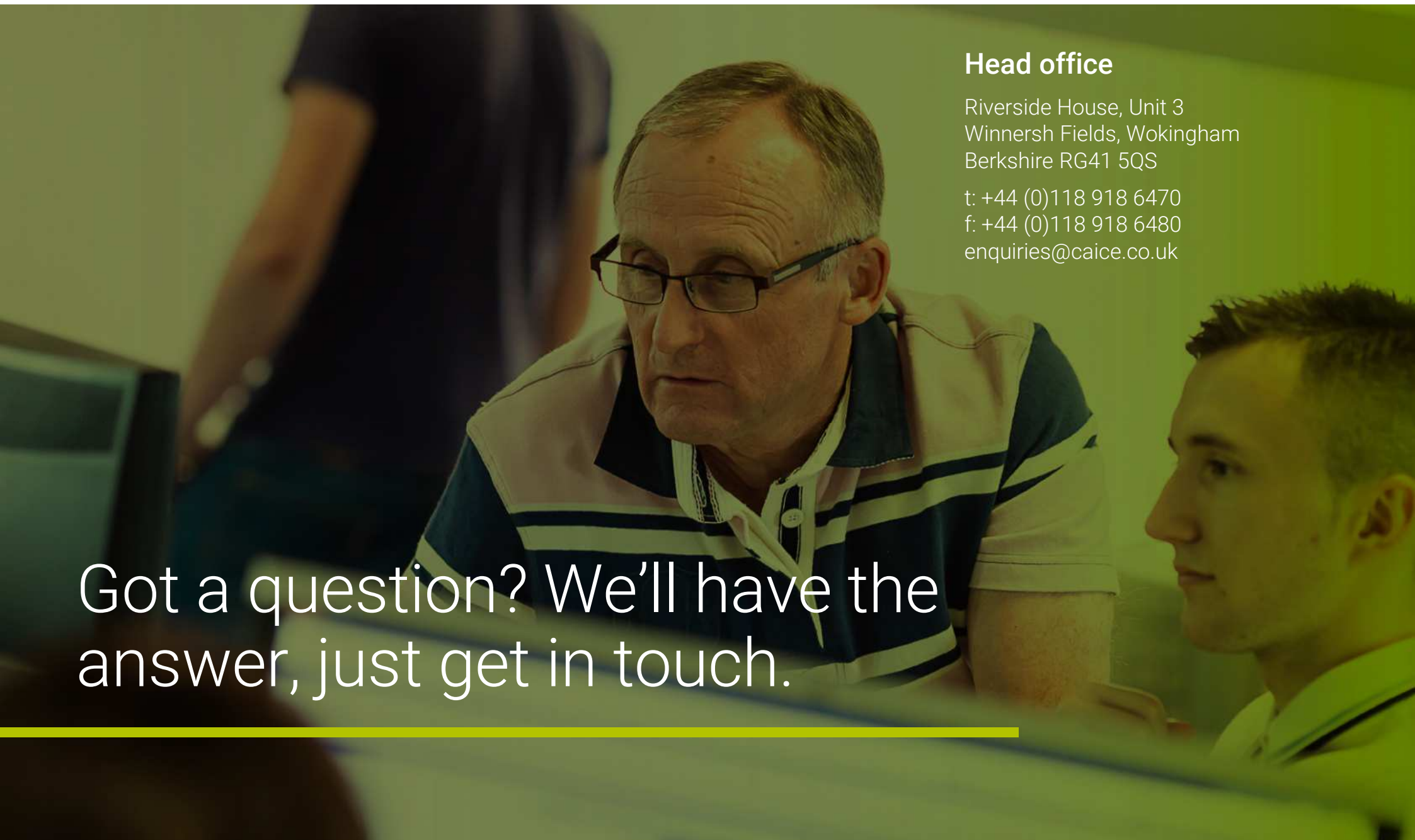
## Head office

Riverside House, Unit 3  
Winnersh Fields, Wokingham  
Berkshire RG41 5QS

t: +44 (0)118 918 6470

f: +44 (0)118 918 6480

enquiries@caice.co.uk

A photograph of two men in an office setting. An older man with glasses and a striped polo shirt is leaning over a desk, looking at a computer screen. A younger man is sitting at the desk, also looking at the screen. The image has a green tint.

Got a question? We'll have the  
answer, just get in touch.

---